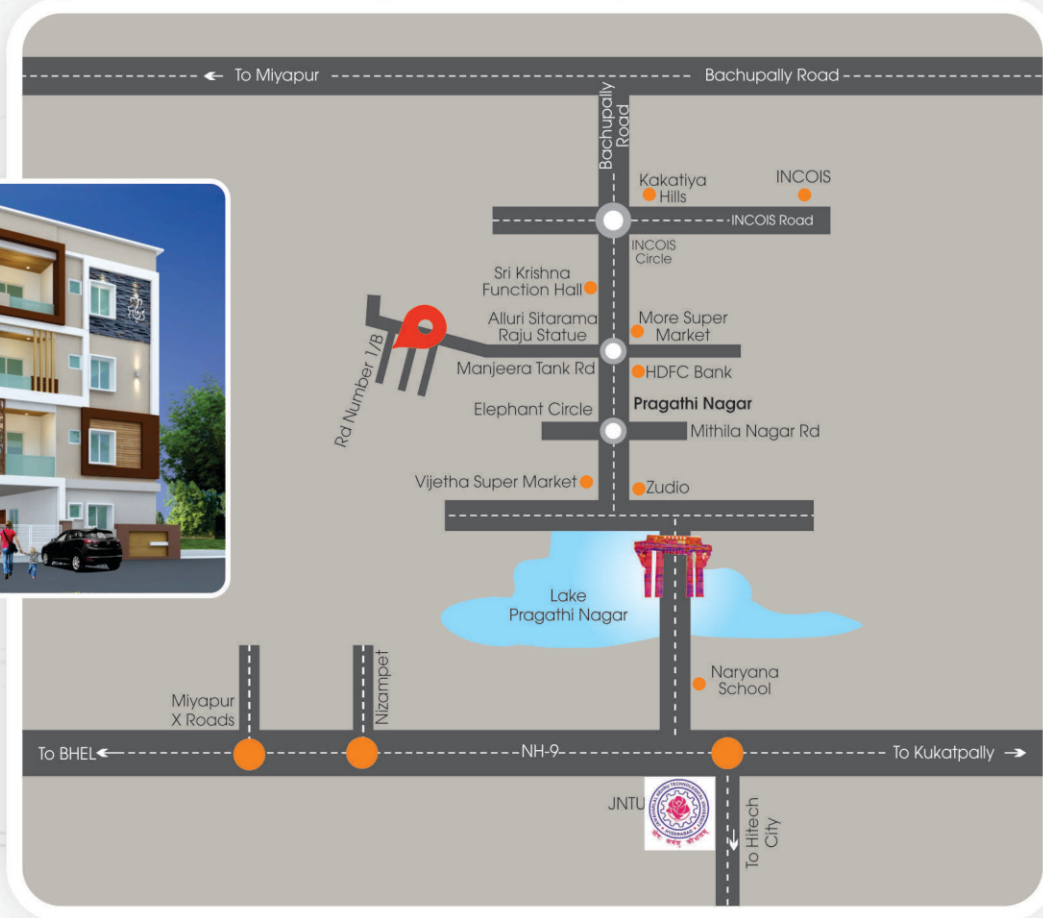


Location map (not to scale)



Promoters

SVR DEVELOPERS

Cell No: +91 99127 44540, +91 99852 77622
+91 99127 66574

Site address

SVR 
Home's

Plot No: 44, 45 & 46, Sai Teja Colony, RGK Road,
Near Alluri Sitarama Raju Statue, Pragathinagar,
Nijampet Municipal Corporation, Hyderabad.

Consultants


SRISOUHA
ARCHITECTS
Sardar Patel Nagar,
Kukatpally, Hyderabad
Cell No: +91 97015 62424

Note: This brochure is a conceptual presentation and not a legal offering. The promoter reserve the right make changes in plans, specifications and elevation as deemed fit.

designed by Barma Ad Systems +91 98664 01362 +91 8897384503 31/10/23

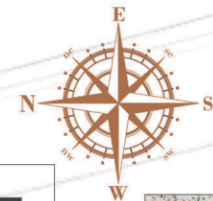
A project by
SVR DEVELOPERS

SVR 
Home's



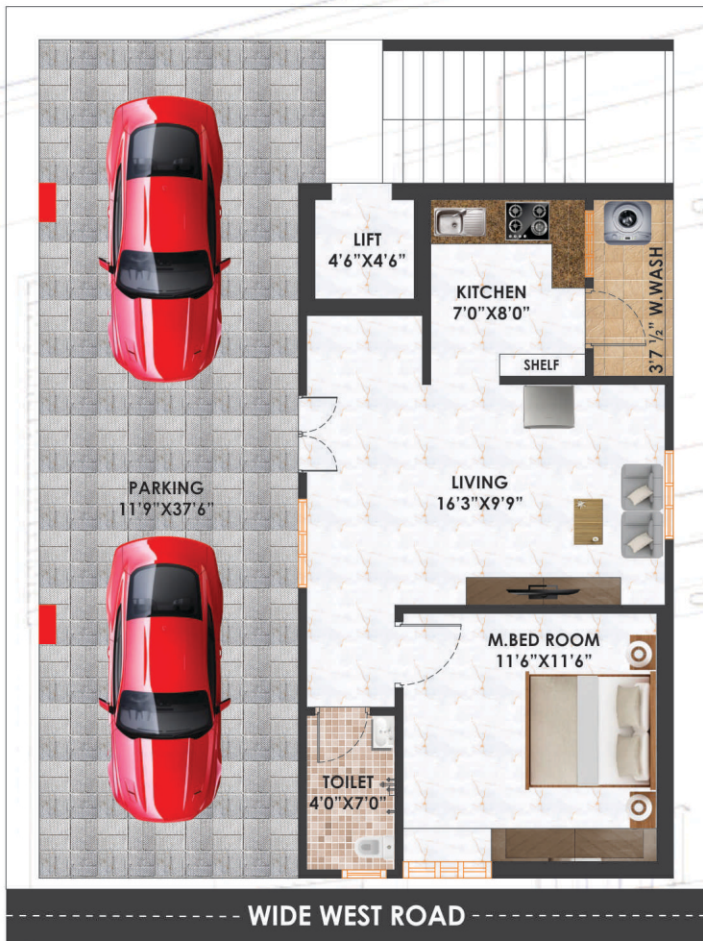
Typical Floor Plan

Ground Floor



Independent House

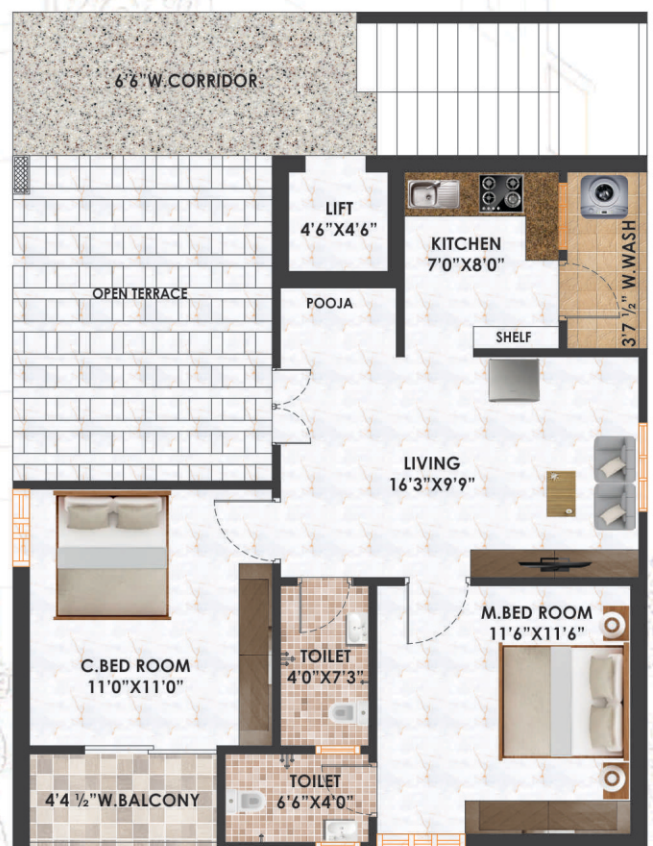
Total Area 4800 sft.



First Floor



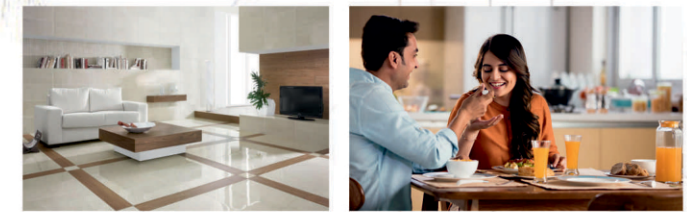
Second Floor



Third Floor



PREVIOUS PROJECTS



SPECIFICATIONS

- FOUNDATION & STRUCTURE**
 R.C.C Framed structure to with Brick walls and Plastered with Cement Mortar.
- SUPER STRUCTURE**
 Red Brick are used for all external and internal walls. The thickness of External wall shall be 9" thick and that of its internal wall shall be 4 1/2" thick.
- FINISHES**
 Internal Walls: Smooth plastered surface treated with putty and painted with emulsion.
 External Walls: Cement plastering with two coats of putty / Textured painted with Exterior emulsion.
 Common area / Elevation: Smooth plastering surface treated with putty/Texture and painted with emulsion. All external walls Texture paint.
- DOORS**
 a) Main Door: Teak Wood frame and Shutter aesthetically designed and finished with melamine polish fitted with good quality hardware and locking system of reputed make.
 b) Internal Doors: Frames- Teak Wood, Shutters- Standard make flush doors or moulded doors along with necessary Hardware.
- WINDOWS**
 UPVC window system with float glass with provision for Mosquito Mesh track. M.S. safety grills for windows will be aesthetically designed.
- KITCHEN**
 Black Granite platform with stainless steel sink with both Drinking and bore water connection. Water Provision for fixing of RO system.
- FLOORING**
 Hall, Bedrooms, Kitchen - Vitrified Tiles.
 Toilets & Balcony- Anti-Skid Matt finish Ceramic Tiles.
 Corridors & Steps - Granite.
- ELECTRICAL**
 Concealed copper wiring. Modular switches / sockets of reputed make.
 Air Conditioner points in all bedrooms.
 Provision of plug points for Geyser and exhaust fan.
 Plug Points for cooking range chimney, refrigerator and one point for microwave oven/mixer/grinder in kitchen.
- PLUMBING**
 All plumbing material will be the reputed brand of ISI approved company Water proofing in all bathrooms and wash area.
- TOILETS**
 EWC with flush tank of best brand.
 Hot and cold water wall Mixer with shower.
- WATER SUPPLY**
 Sufficient water supply lines in bath rooms, Kitchen, wash area. A separate drinking water provided in kitchen (1 tap). Provision of overhead tanks and sump made for bore water and municipal water.
- PARKING**
 As per Architectural Designing.
- COMMUNICATIONS**
 Provision for Telephone points in Master bedroom & drawing/living area.
 Provision for Internet connection in Master bed room & drawing/living area.
 Provision for cable connection in Master bedroom & drawing/living area.
- LIFT**
 Provision for Lift.
- INVERTER**
 Provision for Inverting Wiring.