

PRESTIGE  
**FINSBURY  
PARK-HYDE**  
A LIVING EXPERIENCE LIKE NO OTHER  
BAGALUR



# Sapphire

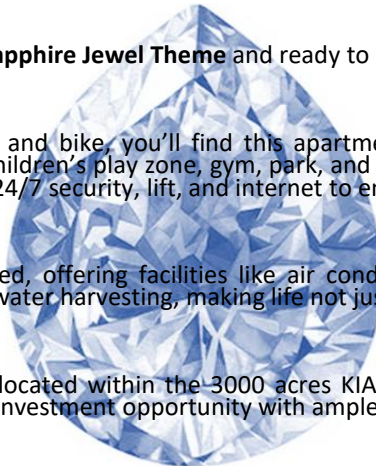


Wisdom | Serenity

House No. : 2036

# Discover Your Dream Home in Bagalur

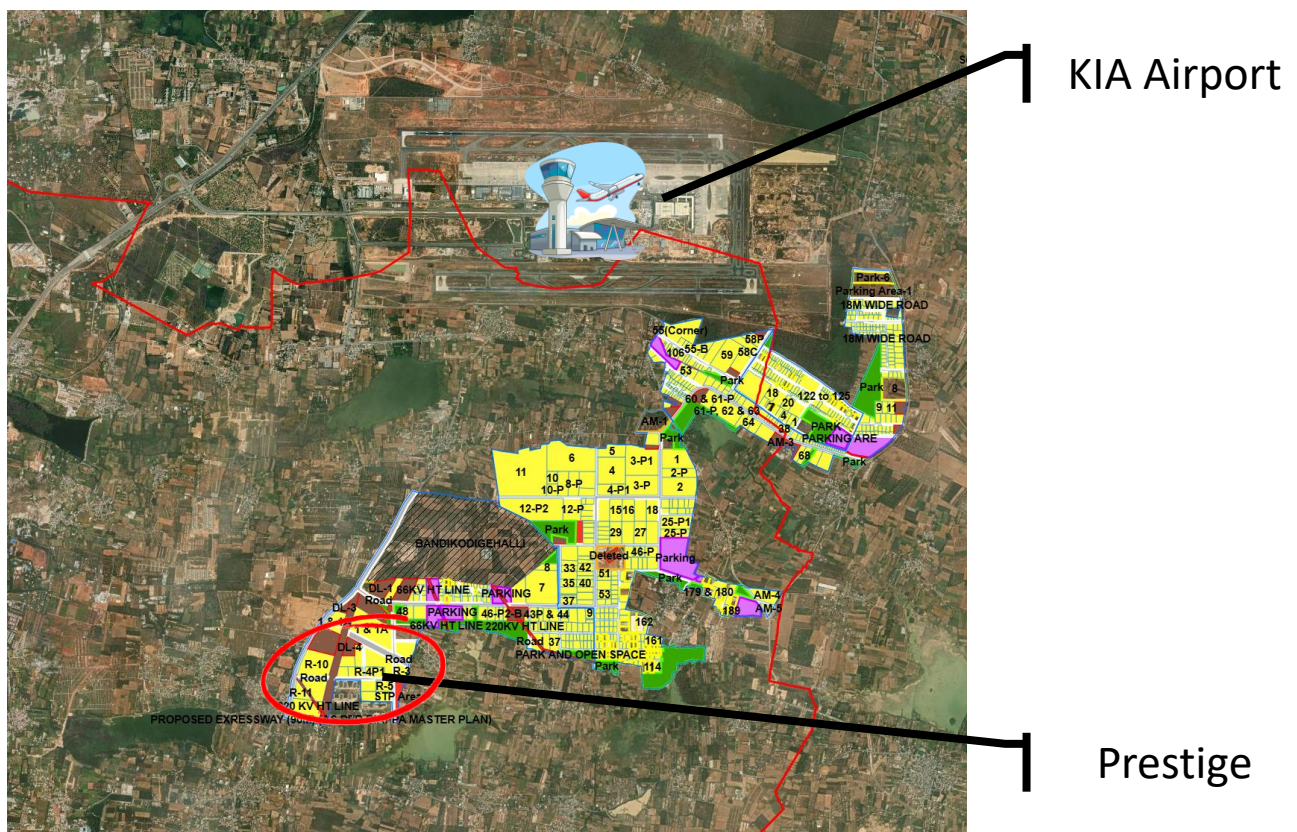
- Step into a cozy haven, ideal for newlyweds or older couples seeking a peaceful retreat away from the hustle and bustle of the city. This west-facing 1 BHK apartment offers a stunning view of the serene lake to the east, letting in soft morning sunlight through the bedroom window and balcony door, brightening your bedroom and living space beautifully.
- Located on the 3rd floor of the first tower, enjoy the convenience of quick access to the apartment, walking paths, and park areas. Designed for both families and bachelors, this home's prime location adds to its charm.
- The flat is semi furnished with a **Sapphire Jewel Theme** and ready to move in immediately.
- With ample parking for your car and bike, you'll find this apartment complex equipped with a host of amenities: a community center, children's play zone, gym, park, and swimming pool. Modern conveniences such as power backup, intercom, 24/7 security, lift, and internet to ensure your comfort.
- This home is thoughtfully designed, offering facilities like air conditioning, fire safety, visitor parking, a sewage treatment plant, and rainwater harvesting, making life not just convenient but delightful.
- Prestige Finsbury Park – Hyde is located within the 3000 acres KIADB SEZ zone with the KIA airport just 8kms away. This gives a potential investment opportunity with ample rental options.
- Nearby reputed schools like DPS, New Excellent English Primary & High School, BM School, and St. Francis School provide excellent options for your children.
- For healthcare needs, hospitals like Manasa Hospital, Sri Maruthi Hospital, and Sanjeevini Health Care Centre are just minutes away. Columbia Asia hospital is just a short drive towards Hebbal.
- Shopping for essentials or indulging in some retail therapy is a breeze with Patanjali Store, Sri Maruthi Store, and Sri Venkateshwara Provision Store in close proximity.
- Make this charming apartment your home and enjoy a lifestyle of comfort, convenience, and serenity.
- With close proximity to multiple clubs including country club gives you the opportunity to spend time with friends and family.



# Details of the SEZ Zone with Proximity to Airport and associated url's

Sl.No	Industrial Area & District	Note
1.	Hi-Tech, Defence & Aerospace Park, Bengaluru Rural & Urban District	Adjoining the Kempegowda International Airport, <b>Hi-Tech, Defence &amp; Aerospace Park</b> is developed in an total extent of 2980.00 acres. The Industrial Area is about 9.00 KMs from NH-7 & it is 31 KMs from Bengaluru City. The Industrial Area is also connected to Railway Station which is about 9.00 KMs (Dodda Jala). In the Industrial Area multi line access road, underground cable for power supply and street lights with dual water supply pipeline for potable and tertiary treated water. For uninterrupted 220/66/11 KV Sub Station is under construction. In addition to this, common facilities such as park, buffer zone, parking is also provided. The Industrial Area best suited for Aerospace Component Industries, IT Industries, Defence Industries. Major Industries located are Amada, Wipro, Tyco, Shell, Theysenkrup, Starrag India.

## KARNATAKA INDUSTRIAL AREA DEVELOPMENT BOARD



K-GIS : KIADBGIS

# Property Master Plan



## Master Plan



## Location Map

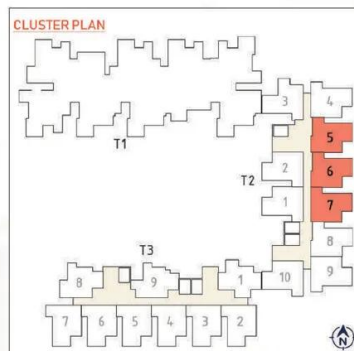
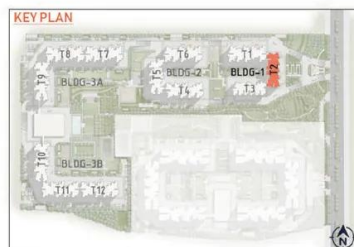


# Floor Plan & Amenities



Unit Type - A10

1 Bed



Building-1, Tower-2  
Unit 5, 6 & 7 - Ground Floor To 21<sup>st</sup> Floor

TYPE - A10 (1 BED)

SALE	650 Sft	60.39 Sqm
CARPET	431 Sft	40.08 Sqm



**Bike and Car**

Parking



Gymnasium



Swimming Pool



Yoga Pavilion



Video Door Phone



Kids Activity Zone



Mini Theater



Tennis Court



Indoor Games Room



Club House



Dance/Music



24/7 CCTV Monitoring

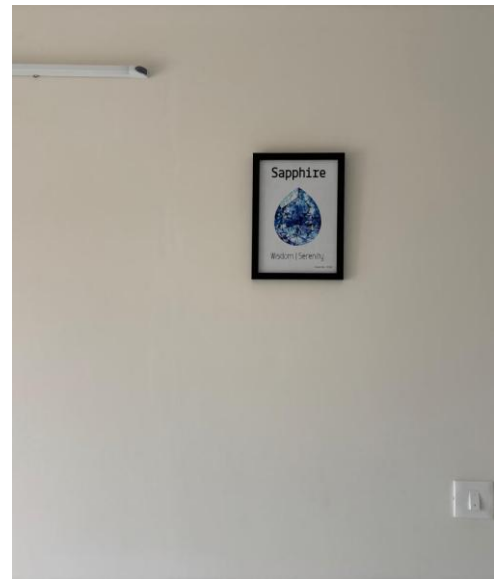


Jogging Track

# Kitchen



# Living Room

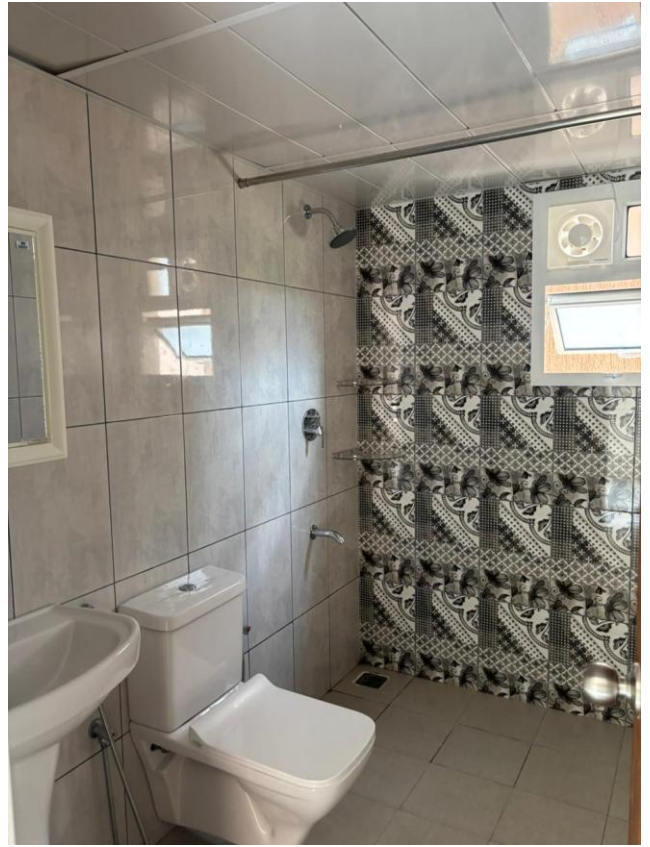




# Bedroom



# Bathroom



# Balcony



# Apartment



# Home Video & Owner Details

• .



**HOME**VIDEO

**CLICK TO PLAY OUR VIDEO**

